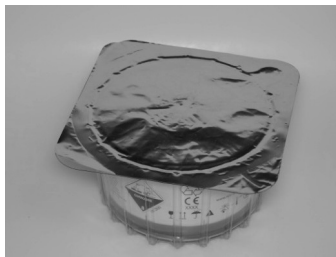




## Handling & Recycling Instructions

Eclipse™ CO<sub>2</sub> Adsorbent should be replaced when FCO<sub>2</sub> exceeds your hospital's agreed limit (i.e. 0.5% volume or 5mmHg). If CO<sub>2</sub> breakthrough occurs during a clinical procedure, fresh gas flow should be temporarily increased to facilitate the replacement of the adsorbent cartridge. Eclipse™ CO<sub>2</sub> Adsorbent does not include a color indicator.

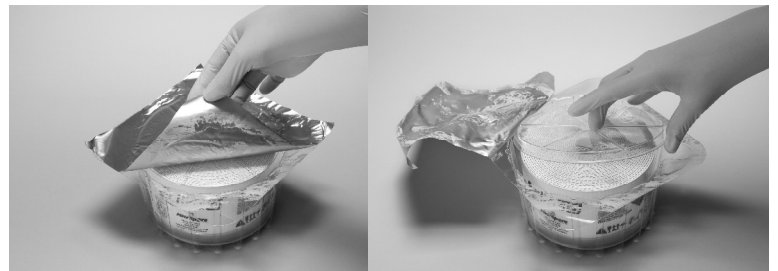
The procedure for exchanging Eclipse™ CO<sub>2</sub> Adsorbent cartridges is the same as the traditional 1.0kg pre-packed granule cartridges, except that Eclipse™ CO<sub>2</sub> Adsorbent cartridges are recyclable and therefore are not to be disposed of in the trash.



Inspect the packaging of a new cartridge prior to opening. If the foil lid material or plastic container is damaged (ripped or split), the cartridge has been exposed to CO<sub>2</sub> and should not be used.

To avoid contact with skin use rubber gloves when handling cartridge.

Remove Eclipse™ CO<sub>2</sub> Adsorbent cartridge from packaging by removing foil seal (pic) and plastic retainer / lid (pic).



No other items are to be removed from the cartridge.



When placing Eclipse™ CO<sub>2</sub> Adsorbent cartridge into empty adsorbent housing (pic) ensure no foreign materials are present in the adsorbent housing, as this may cause gas to bypass the cartridge seal, rendering the adsorbent ineffective.

Place exhausted cartridge into empty container, refit plastic lid and place in designated collection area for consolidation and subsequent return for recycling.



### **NOTE:**

**DO NOT DISPOSE OF CARTRIDGE - THE ADSORBENT MATERIAL IS RECYCLABLE**

[www.EclipseCO2Adsorbent.com](http://www.EclipseCO2Adsorbent.com)